



HPL surfaces can be personalized with an image, colors and textures. This gives a room or piece of furniture a unique character, without detracting from the properties of the HPL.

High scratch/shock resistance



Excellent fire behaviour



Easy to process



Antistatic



Easy to clean



Excellent hygiene quality



Suitable for contact with food



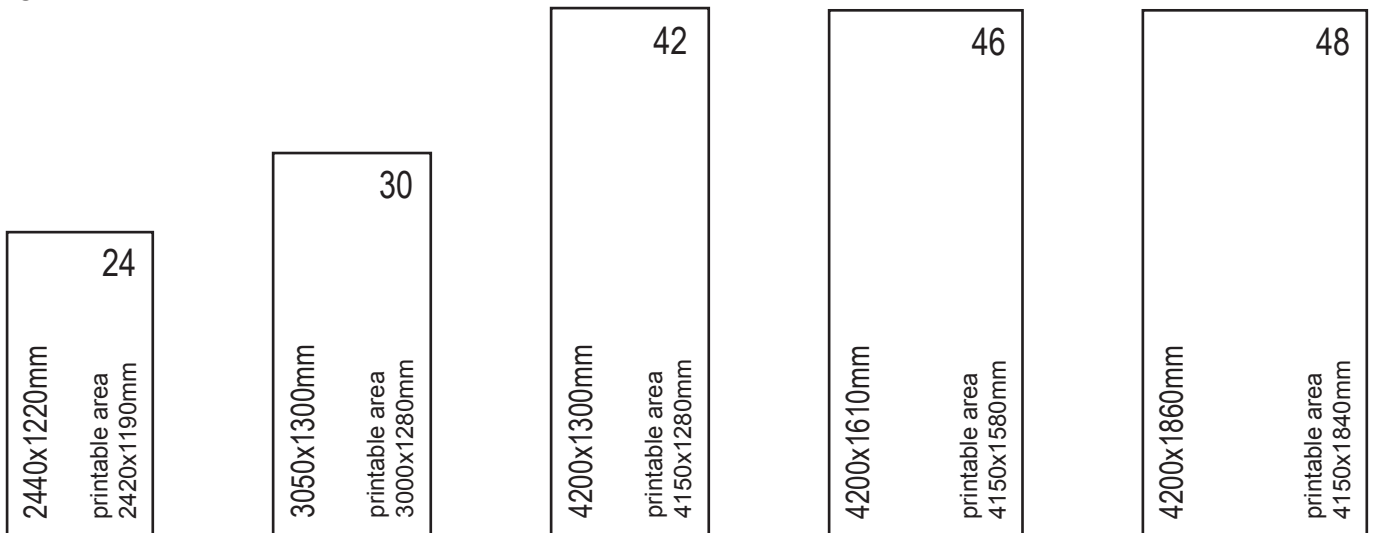
## Abet Digital

## SPECIFICATIONS

### Types - dimensions - thicknesses

- Standard thin interior HPL type HGS (thickness 1mm) → size 24-30-42-46
- Translucent interior HPL type Diafos Plus (thickness 0,6 - 1,6 - 5mm) → size 30
- Compact interior HPL type Stratificato CGS (thickness 2 to 30mm) → size 24-30-42-46-48
- Compact exterior HPL type MEG (thickness 2 to 18mm) → size 30-42

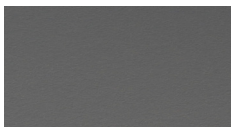
The types HGS and CGS are also available with a colored core type Full Color according to logistical options.



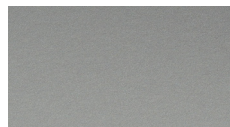
### Finish

You can choose from all Abet Laminati finishes according to logistical options.

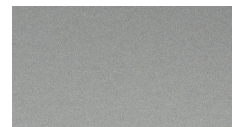
Abet recommends choosing from the following finishes for the best quality of the picture/illustration.



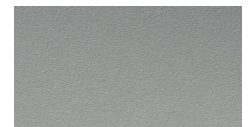
SEI (standard finish)



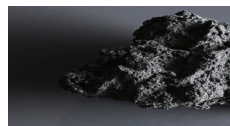
SEI-DUE



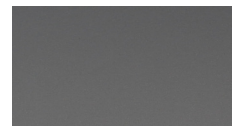
PAPIER



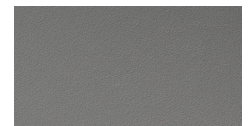
ZODIA3



LUCIDA



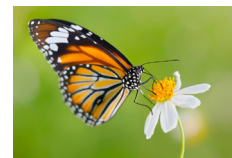
MORBIDA



ZODIA

## Digital file to be supplied

- Full size file (scale 1/1)
- File format: TIFF – PSD – EPS – Print ready PDF
- File format in a package: AI – INDD
- Resolution: 300 dpi
- Color mode: CMYK



The quality of the picture/illustration depends entirely on the file supplied.

We always ask you to provide a print-ready file! So picture/illustration already positioned on 1 of the 5 possible HPL formats. If needed, turn different layers on/off, ...

If necessary, Abet can assist with this.

Pictures/illustrations spread over different panels must be supplied with different digital files. Abet can also assist with this.

The white paper used for digital prints is a special paper. Therefore you CANNOT choose an Abet Colours color (e.g. 406) for digital printing > the paper used for the Colours collection is absolutely not suitable for digital printing. The digital files must therefore be formatted including the background color.

The digital files are submitted for approval to the technical management of Abet Laminati. The quality of the digital files and their content are the full responsibility of the client. Abet Laminati reserves the right to refuse digital files for technical, ethical, or other reasons.



## Delivery

A test sample is always made for approval before the final production of the plates can be started.

Delivery time for sample = 2 to 3 weeks.

Indicative delivery time of plates after sample approval/receipt of final files:

- 6 to 8 weeks for interior quality
- 8 to 10 weeks for exterior quality

